

Willoughby Office  
(772) 220-7877  
willoughbysales.com

FENTON LANG BRUNER  
& ASSOCIATES  
LICENSED REAL ESTATE BROKER

Exclusive Affiliate of  
CHRISTIE'S  
GREAT ESTATES  
fentonandlang.com

Est. 1947

### Willoughby Golf Club



Information deemed reliable but not guaranteed



772-220-7877  
 FentonandLang.com  
 Virtual Tour Online

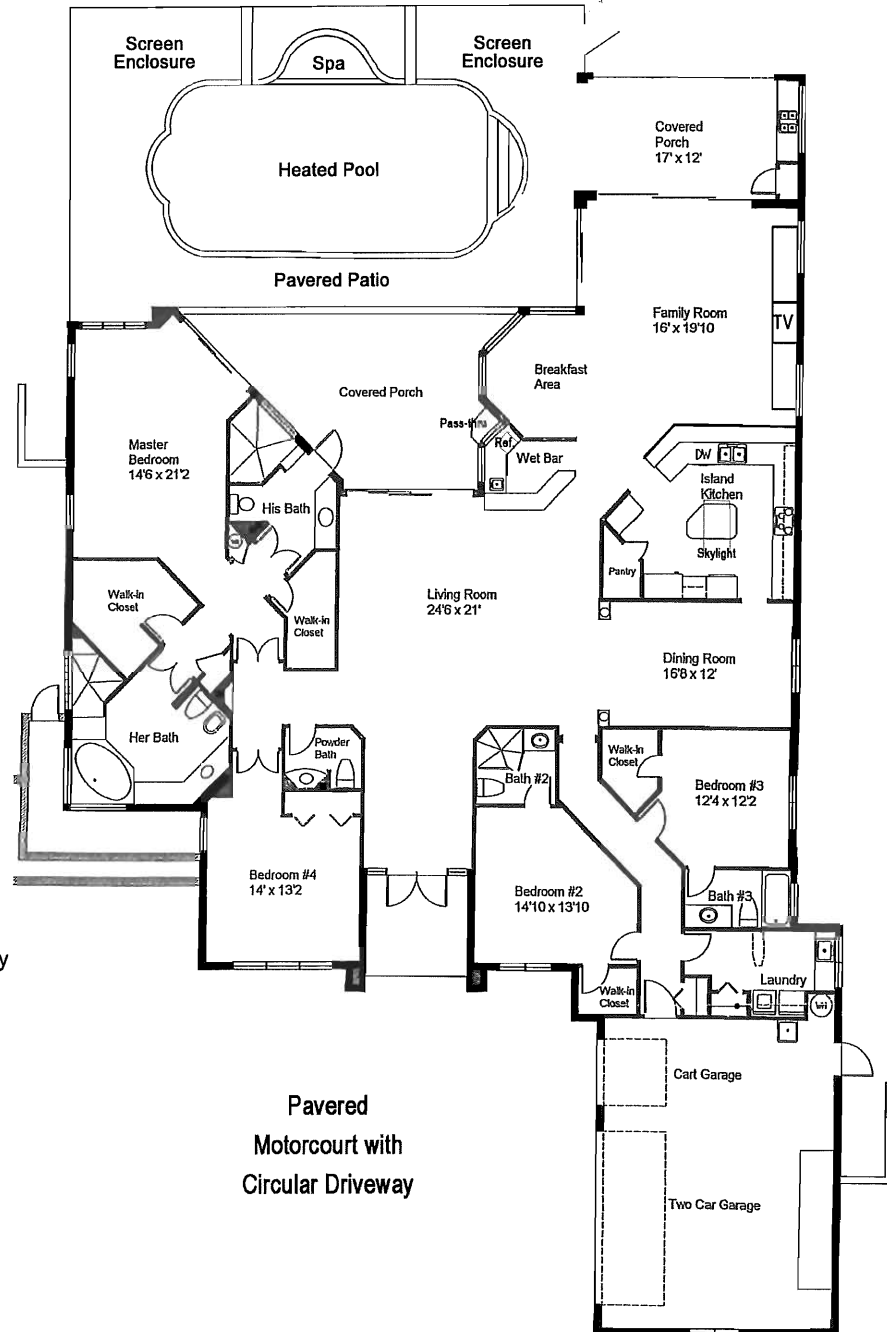
**FENTON LANG BRUNER  
 & ASSOCIATES**  
 LICENSED REAL ESTATE BROKER  
 Est. 1947

Exclusive Affiliate of  
**CHRISTIE'S**  
 GREAT ESTATES

**3595 SE Doubleton Drive**  
**3 Bedrooms • Den • 4.5 Baths**  
**\$825,000**

**Square Footage**  
 A/C Living Area 3,720  
 Total 5,130

- ✘ Quality-built custom estate home overlooking the 4<sup>th</sup> hole
- ✘ Built in 1997 and has been maintained to perfection
- ✘ Leaded glass entry doors, sidelights & palladium above
- ✘ Travertine marble color (granite inserts in some areas)
- ✘ Volume ceilings & double crown moldings in main areas
- ✘ 3 elegant chandeliers & 52 high-hat fixtures
- ✘ Solid core interior doors with applied molding
- ✘ Exquisite designer window treatments throughout house
- ✘ Newer carpet in living room, den & bedrooms
- ✘ Dining room has triple tray ceiling, chandelier & sconces
- ✘ Centrally located step-down granite topped wetbar
- ✘ Built-in entertainment center (15 ft.) in family room
- ✘ Spacious den includes large custom closet
- ✘ Kitchen features:
  - White Italian High-gloss cabinets w/crown molding
  - Giallo Veneziano granite countertops & island
  - 48" Sub-zero refrigerator & Kitchen Aid gas cooktop
  - Double built-in ovens (convection)
  - Walk-in pantry & U-line wine cooler
  - Huge skylight brings in copious natural light
- ✘ Breakfast nook has coffered ceiling & pass-thru
- ✘ Solid-core double doors leading to master suite
- ✘ Spacious master suite has a tray ceiling
- ✘ Spacious His & Her master baths (His = Cabana)
- ✘ His & Her walk-in-closets w/ custom shelving
- ✘ Large guest bedrooms include baths & walk-in closets
- ✘ Screened enclosure features 2 covered lanais
- ✘ Side lanai (designed for privacy) w/ new gas grill, hood, cabinetry
- ✘ Custom-designed (16 x 36) "Roman End" pool & spa
- ✘ New propane heater (replaced in 2010)
- ✘ Laundry room w/ built-in ironing board & drip area
- ✘ Ceiling fans & central vacuum throughout house
- ✘ 20 state-of-the-art stereo speakers – main living areas
- ✘ 80 gallon gas water heater w/ circulating pump
- ✘ Tinted Thermopane sliding doors & windows
- ✘ Two zoned air-conditioners w/ hydrostatic air filters
- ✘ Exterior landscape lighting & security lighting
- ✘ Separate well (136 +/-) deep for irrigation system
- ✘ Two-car garage plus separate golf cart entry
- ✘ Highly-rated storm-resistant overhead doors
- ✘ Hurricane shutter protection



See Slideshow Online @  
[www.willoughbysales.com](http://www.willoughbysales.com)