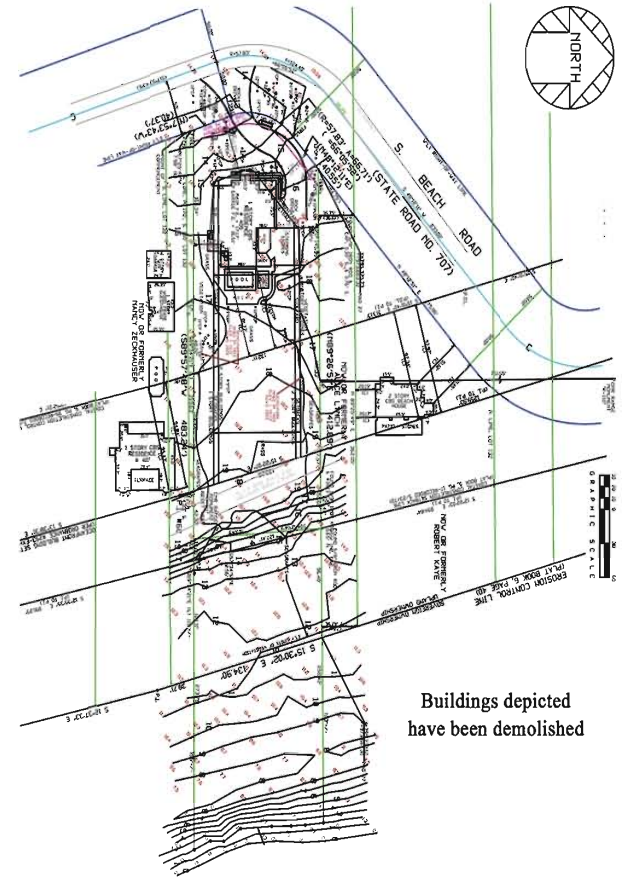


405 South Beach Road  
Jupiter Island, Florida



EXCLUSIVE AFFILIATE OF  
**CHRISTIE'S**  
INTERNATIONAL REAL ESTATE



***Build the Ideal Island Dream House***

Spectacular views can be enjoyed from this Jupiter Island homesite with 1.38+/- buildable acres on South Beach Road. The property offers approximately 134 feet along some of the most beautiful stretches of beach in all of Florida. With over 400 feet of depth, this could be the perfect location on which to build a beach house retreat, custom residence, or a private family compound.

*Offered at \$5,299,000*

**Jupiter Island Sales Office**  
 2 South Beach Road  
 Hobe Sound, Fl 33455  
 772-546-2381 | 800-587-4753

**FENTON LANG BRUNER  
 & ASSOCIATES**  
 LICENSED REAL ESTATE BROKER  
 Est. 1947

Scan QR code with  
 a smart phone or  
 visit our website at  
**FentonandLang.com**

